

Amcorder Recording Ammeter

Collect and analyze load profiles

Patented open CT sensor with $\pm 1\%$ accuracy

Easily clamps to the line in seconds

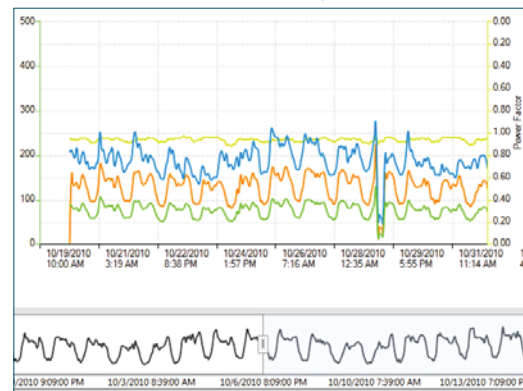
Recorded data quickly downloads into the user's PC

Softlink interface makes data analysis easy

Generate reports and create graphs for profile analysis



Graphing with Softlink Software



The **Amcorder** uses the same sensor technology as the original Ampstik®. The True RMS inductive sensor does not use magnetic materials and has no moving parts. The opening of the sensor is electronically closed and external currents are electronically rejected. The accuracy, external current reject, and range of currents measured by the amp sensor substantially exceed the performance of other industry sensors.

The **key feature** of the Amcorder is the ability to leave it deployed on the line to record average current readings, at user-defined intervals, for up to

90+ days. It easily attaches to the line with a hotstick. Once on the line, it immediately begins to collect and record the current load on the line.

The **Amcorder** is equipped with an infrared serial port for communicating the recorded data into the user's computer. The data is downloaded through SensorLink's Softlink software, which allows the user to download, view and query the data stored on the Amcorder.

SensorLink's **SoftLink** software is a user-friendly software interface that allows the user to download, view, graph and export data from the

Amcorder. Data is saved as an .xls file, allowing it to be opened and analyzed in other data management programs.

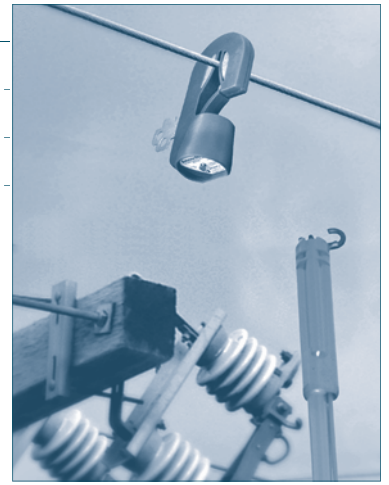
The **housing of the Amcorder** is made of urethane and is built to operate safely, even in severe utility environments. It is resistant to shock, repels water and is unsusceptible to flame. It also operates within a wide temperature range. The Amcorder has a urethane carabiner latch assembly, which allows it to securely hang on the line in all weather conditions.

Applications

Check for load balance

Conduct load studies

Meter Verification



Amcorder Recording Ammeter

Model Number	6-920-3
Description	Amcorder, Three Phase Kit
Kit Includes	3 ea Amcorder 1 ea IrDA USB Cable 1 ea Softlink Software 1 ea Hotstick Adapters 1 ea Carrying Case
Range of Operation	
Voltage	69kV
Current	1 to 1000A
Sensor Opening	Up to 1.3 in, up to 3.3 cm
Resolution	
Amps 1-99A	0.1A
Amps 100-1000A	1A
Accuracy	±1%, ±2 Counts
Frequency, 50 Hz	47 to 53Hz
Frequency, 60 Hz	57 to 63HZ
Mechanical	
Weight	1.5 lbs, 0.68 kg
Dimensions	9.8 in x 4.8 in x 3 in (24.77 cm x 12.07 cm x 7.62 cm)
Operating Temperature	-4° to +140° F, -30° to +60° C Lithium battery required for temperatures below -4°F (-20° C)
Housing	Shock resistant molded urethane
Hotstick Mounting	Shotgun or Universal. Hotstick not included.
Battery	9V Alkaline or Lithium, one each per Recorder
Software Requirements	Softlink by SensorLink
RAM	32 MB, 64 Recommended
Processor	100 MHz or Higher (200 MHz or higher recommended)
Drive Space	15 MB to load software, 10 MB of Operating Space
Data Collection Space	64,000 data points
EEC Standards	Successfully passed international test standards indicated by CE



Three Phase Amcorder Kit Universal Hotstick Adapter



SensorLink® Corporation

1360 Stonegate Way
Ferndale, WA 98248 USA
phone 360.595.1000
fax 360.595.1001
www.sensorlink.com