



Operators Manual

# Recording Ammeter

Amcorder UG

# Operators Manual

## Amcorder UG

### Underground Recording Ammeter

Available Stock Codes:			
920 UG 50HZ	920 UG 60HZ		

## Table of Contents

### Amcorder

Specifications	2
Safety Information	3
Powering the Unit	3
Cleaning	3
Low Temperature Applications	3
Battery Replacement & Life	4-5
Submersed Applications	5
Installation	6-7
Warranty	14

### SoftLink Software

System Requirements	8
Softlink Installation	8
Install IrDA Driver	8
Connect	9
Discover	9
Download	10
Configure	11
Troubleshoot IrDA	12
Graphing	13
Battery & Operation	13



# SPECIFICATIONS

Kit Number	6-920-UG-3
Type	Three Phase Underground Recording Ammeter Kit 3 ea Amcorder UG 1 ea IrDA Serial Cable 1 ea Soft Carrying Case 1 ea Softlink Software
Range of Operation	
Voltage	69 kV
Current	1 to 2000 A
Resolution	
Amps	0.1 A
Accuracy	
Amps	± 1%, ± 2 Counts
Frequency, 50 Hz	47 to 53 Hz
Frequency, 60 Hz	57 to 63 Hz
Mechanical	
Weight	1.8 lbs, 0.82 kg
Sensor Opening	up to 2.5 in, 6.35cm
Dimensions	8.87 in x 5.38 in x 3.74 in, 22.3 cm x 13.7 cm x 9.5 cm
Housing	Shock and water resistant molded urethane
Operating Temperature	-22 to +140° F, -30 to +60° C Lithium battery required for temperatures below -4°F (-20°C).
Submersible	Submersible to 6 ft of water
Hotstick Mounting	Shotgun Style Hotstick (Hotstick not included)
Battery	9 Volt Alkaline or Lithium
Software Requirements	Softlink for SensorLink
Processor	100 Mhz or Higher, 200 Mhz Recommended
RAM	32 MB, 64 MB Recommended
Drive Space	15 MB to Load Software, 10 MB Operating Space
Data Collection Space	64,000 Data points

## **Safety**

The Amcorder UG is designed for use with a suitable shotgun style hotstick. All precautions appropriate for the line voltage should be taken. The hot stick should be considered the sole voltage isolation device.

For safety purposes the cover plate, chuck, and entire Amcorder UG should be considered to be at the same potential. Putting the cover plate, chuck, or other parts of the Amcorder within the air gap of adjacent phases or ground could cause a phase to phase or phase to ground fault.

## **Powering the Unit**

The Amcorder UG powers on and begins taking recordings when the battery is properly placed into the battery compartment.

## **Cleaning**

Clean the Amcorder by wiping with a small amount of alcohol on a rag.

## **Transporting**

There are no special considerations for transporting this device.

## **Low Temperature Applications**

The Alkaline Battery and the IrDA transceiver are two components that limit the operation of the unit down to  $-4^{\circ}\text{F}$  /  $-20^{\circ}\text{C}$ . By substituting a Lithium long-life battery the unit can collect data down to  $-30^{\circ}\text{C}$ . Because the IrDA cable doesn't perform at these low temperatures, when collecting the data from the Amcorder the temperature needs to be above  $-4^{\circ}\text{F}$  /  $-20^{\circ}\text{C}$ . Lithium batteries are the same long-life batteries used in smoke detectors. They sell by the brand names UltraLife and Energizer.

# Battery

**Changing the Battery:** The Recorder requires one 9V Alkaline battery. Remove the screw at the base of the unit and remove the cover plate. Snap the battery to the connector, and insert into the battery slot. Replace the cover plate. The Recorder is designed to have a fresh battery replaced each time it is setup and deployed. A fresh battery should have greater than 9.2 VDC. As batteries have a short shelf life, care should be taken to make sure that fresh batteries are used.

**What happens if the battery drops below five volts?** The recorder will stop operating when the battery fails to supply more than five volts. All logged data is safely stored in flash memory.

**Expected Battery Life:** The expected life of the battery varies by how often the unit samples the line to collect data and the ambient temperature. Fresh non-rechargeable batteries are required so the reliability and life of the battery can be easily predicted. Predicting the life of rechargeable batteries is uncertain, especially after several recharges. The standard 9-volt Alkaline and Lithium batteries were chosen because they are inexpensive and are readily available throughout the world. The Lithium batteries recommended are commonly referred to as long-life smoke detector batteries and sell by the brand names UltraLife and Energizer.

The following Table indicates the expected battery life at 68° F or 20° C

Sample Interval (Seconds)	Expected Life of a 9-volt Alkaline Battery (Days)	Expected Life of a 9-volt Lithium Battery (Days)
60	180	360
30	120	240
15	75	180
10	60	120
5	28	60
1	7	14

Alkaline operating time reduced to 25% at -4° F or -20° C

Lithium operating time reduced to 75% at -4° F or -20° C

Lithium operating time reduced to 50% at -40° F or -40° C

**\*PLEASE NOTE\*:** Once a fresh battery is inserted, the user has five minutes to start downloading the data before the unit resets itself. The unit will only save the logged data in its flash ram for 5 minutes. **We recommend that you do not remove the battery until you have downloaded all of the data.** A new battery should be placed into the Amcorder before it is deployed on the line to ensure the reliability of the battery life.

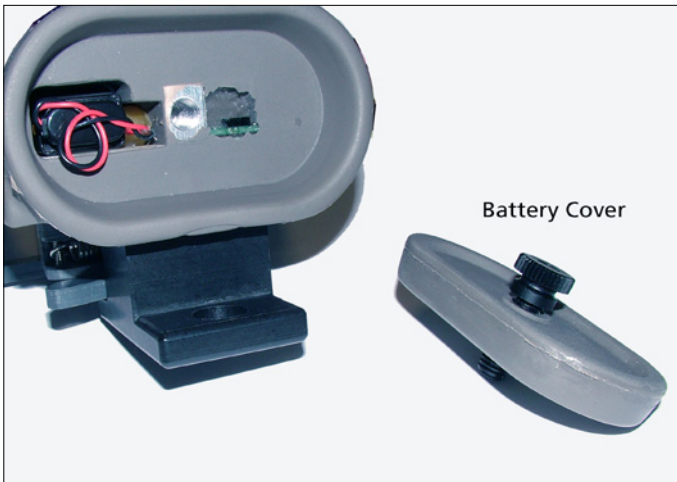
**How many days will the Recorder log data?** The length of the log interval determines the length of time the Recorder will take to use all of the available logged data points. See the below chart for the number of days it will take to fill a Recorder with data, based on various log intervals. Note that in most cases the Recorder is limited to battery life more than recording capacity.

Log Interval (seconds)	Log Interval (Minues)	Days Recording Until Full
1800	30	1333*
900	15	666*
600	10	444*
300	5	111
30	1	222
30		44
5		22

\*Exceeds expected battery life

## Submersed Applications

When placing the Amcorder UG in an application where it may become submersed in water, make sure that the battery cover is seated tight against the bottom of the battery cavity. If the Amcorder UG is going to be left submersed for an extended period of time, place a bead of grease to the sides of the battery cover.



# Installation

## Attaching the Amcorder UG to an elbow:

**Step 1:** Attach the Shotgun or Grip All type hot stick to the Amcorder UG

**Step 2:** Cock the clamp on the Amcorder UG in the open position



**Step 3:** Place the Amcorder UG on the conductor beneath the elbow and above the concentric neutral

**Step 4:** Make sure that the clamp closes around the conductor

**Step 5:** Remove the hot stick from the Amcorder UG



# Un-Install

## **Removing the Amcorder UG from an elbow:**

**Step 1:** Attach the Shotgun or Grip All type hot stick to the Amcorder UG

**Step 2:** Pull the Amcorder UG off the elbow

*Note: If there is a concern about pulling the elbow off the bushing, pull from the side, or use a second hot stick to hold the elbow in place.*



# Softlink for Amcorder UG

SoftLink is a software application that allows the user to download, view, graph and import data from their Recorder. In order for a PC running SoftLink to communicate, the Recorder must be powered on, with the IR port on the unit in-line with the IrDA USB that is connected to the PC.

## Softlink System Requirements

SoftLink installs on all computers running Windows XP, XP-Pro, Vista, Windows 7, and Windows 8. Softlink requires Microsoft .NET 4.0; the following installation process will install .NET 4.0 if not already installed.

## Softlink Installation

*Step 1:* Softlink Installation Wizard will automatically load when the CD is placed in the PC.

*Step 1a:* To launch the install manually, go to the Start Menu, select RUN, and type :SETUP.EXE, OR - Click on browse, open the drive that your CD is located, and double click on file titled SETUP

*Step 2:* You must agree to the licensing agreement to proceed with the download

*Step 3:* A dialog box will appear to let you know when the download is complete

*Step 4:* To open Softlink, click on the Start Menu. Under Programs, select Softlink. Shortcut paths will automatically load during the install.

## IrDA Driver Installation

For information on this install, please reference the IrDA manufactures' documentation available on their product CD, or [www.actisys.com/downloads](http://www.actisys.com/downloads).

### QUICK START GUIDE

[ACT-IR224UN-LN115GENERAL SETUP PROCEDURE]

1. Make sure IrDB usb is NOT plugged into the PC until the driver is installed.
2. Insert the installation CD and run the setup file.
3. Click "Next" to continue through the IrDA Driver Installer welcome screen.
4. When this Installation completes, click "Finish" to close the Wizard window.
5. Insert the IrDA cable into the USB port. A message will pop up stating: "Found new Hardware", then replaced with "New hardware successfully installed and ready to use."

### Known Incompatibilities List:

Laptop docking stations - Causes the program to hang up or have no communication with the USB

USB Port Authority - Network security/group policy provisions restricting access to USB Ports

Installation Authority - Network security/group policy provisions restricting access to application installation

Network Installations - Applications stored on the server are not supported

# Connect with IrDA

To communicate with a Recorder, follow these steps:

Step 1: Insert the IrDA cable into the PC's USB port

Step 2: Position the Recorder so the IrDA Port, located at the bottom of the unit, is facing the connected IrDA. The battery cover has to be removed.

Step 3: Open Softlink from either the Desktop or Start Menu.

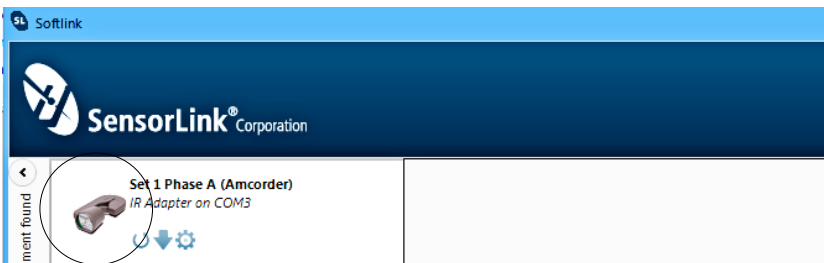
Softlink will automatically discover the IrDA and display the communication device in the upper left corner of the program.



## Discover

Softlink will automatically discover an available Recorder within 20-30 seconds.

Clicking the discover button instructs the IrDA to immediately find the Recorder and expedite communication to the Recorder.

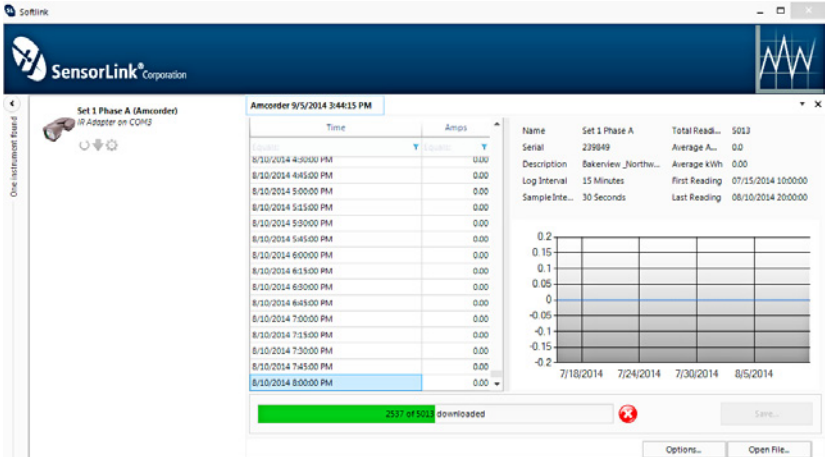


The description and photo displayed will change from the communication device to the unit when the Recorder has been discovered.

# Download

Clicking the Download button instructs Softlink to begin downloading data from the Recorder.

The user is able to view the Recorder's configuration, data, and progress as it is downloading in both a chart view and graph view.



The download can be stopped at any time by selecting the red button.

**\*PLEASE NOTE\*:** Once a fresh battery is inserted, the user has five minutes to start downloading the data before the Amcorder resets itself. The Amcorder will only save the logged data in its flash ram for 5 minutes. **We recommend that you do not remove the battery until you have downloaded all of the data.** A new battery should be placed into the Amcorder before it is deployed on the line to ensure the reliability of the battery life.

# Configure

Select the Configure button to setup Recorder preferences.

The screenshot shows the 'Amcorder Configuration' window. It includes the following details:

- Amcorder Information:**
  - Serial Number: 239849
  - Firmware: 920-2.00.0014 15 Feb 2004
  - Name (16 Characters): Set 1 Phase A
  - Description (46 Characters): Bakeview & Northwest May 5 - 12
- Log Interval:** A slider bar with a value of 15 minutes.
- Sample Interval:** A slider bar with a value of 30 seconds.
- Clear all logged data from your instrument and synchronize logging with the hour
- Buttons: Cancel, Upload

**Name:** Identify the Recorder with up to 16 characters.

**Description:** Enter a description of up to 46 characters. For example, you may want to note the Recorder's service location and the date range for the recordings.

**Log Interval:** Select how often to log data. The Recorder averages all samples taken since the previous logging and records the result. Typical sample and log interval synchronization are one minute and 15 minutes, respectively. The log interval must exceed the sample interval.

**How many Log intervals are available in the Amcorder?** 64,000

**Sample Interval:** Select how often the Recorder will sample current by sliding the cursor on the scroll bar. Battery life depends on this setting; see page four.

**Synchronization:** Selecting the "Clear all logged data from the Recorder... and synchronize logging to the hour" box will allow the Recorder to synchronize itself to the computer's clock. When multiple Recorders are setup and synchronized using the same log interval and the same computer, they will all log at the same time.

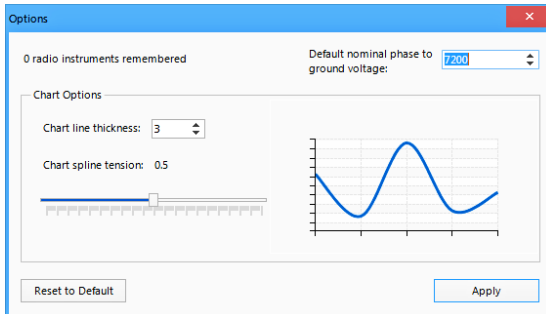
**Clock is Set:** If the Recorder is not synchronized before hanging on the line, the log times will be set, even though not evenly aligned to the hour.

**Clock is Unset:** If the Recorder's battery fails prior to any Softlink communication.

**Legacy:** Older version Recorders cannot be synchronized. To achieve log-time accuracy with these units, take them down before the battery fails, and download all data before re-hanging the unit. All log times prior to the first download are accurate to within a log interval, as long as the battery has not failed.

# Options

The options button on the Download Screen allows the user to change certain preferences.



**Chart line thickness:** The thickness of the graph lines can be changed by the user. Thickness is numbered 1 - 10, and defaults at three. The software will show a preview to the user as the value is changed.

**Chart spline tension:** The chart spline tension is used to smooth graph lines. The spline tension range is 0 - 1. Slide the scroll bar to change the spline tension. The software will show a preview to the user as the value is changed.

**Default nominal phase to ground voltage:** This option is for Varcorders and has no effect on the operation of an Amcorder.

**Radio instruments remembered:** This option is for overhead Recorders using Radio Transcoders. It has no effect on operation of the Amcorder UG.

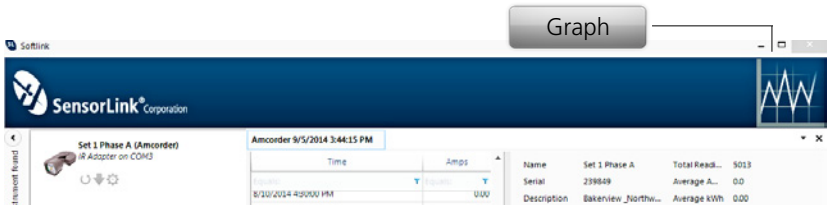
## Troubleshooting IrDA Communication

If the unit is having problems communicating, try the following:

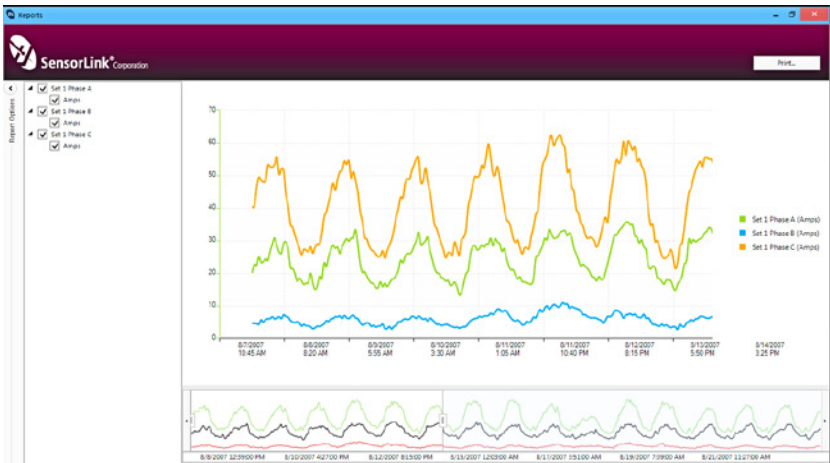
- Position the IrDA three feet away from the Recorder.
- Examine the IrDA connection to the PC, and reconnect, if necessary.
- Verify the battery has greater than 5 Volts with a Voltmeter. If low, replace.
- IrDA USB cables are not universal; using an IrDA not supported by Softlink may not work. The IrDA you received with your kit has been tested to work with the Recorders.
- Try restarting Softlink by first exiting and then restarting.
- Try restarting your computer and then re-open Softlink.

# Graphing

To graph the downloaded data, click the Graph Icon on the download screen.



A second screen will open and display the data in graphical format.



## Report Options

Select the units and measurement parameters to graph by clicking in the selection boxes. Only selected measurement parameters will display on the graph.

## Hide and Show Report Options

Click the left arrow to hide Report Options. Click the right arrow to show the hidden Report options.

## Zoom Window

The bottom graph displays the entire time series. To view a section of time, adjust the left and right sliders. The upper graph will display the values between the slides.

## Cursor Tool

Placing the cursor over the graph will display the date and time values of the measurements.

# SensorLink Corporation Warranty

SensorLink Corporation warrants each instrument it manufactures to be free from defects in materials and workmanship under normal use and service for the period of one year after date of shipment. Within this period, SensorLink Corporation agrees to repair or replace, at SensorLink Corporation's option, any instrument that fails to perform as specified. This Warranty shall not apply to any instrument that has been:

- 1 Repaired, worked on, or altered, including removal of the front panel, by persons unauthorized by SensorLink Corporation in such a manner as to injure, in SensorLink Corporation's sole judgment, the performance, stability, or reliability of the instrument;
- 2 Subjected to misuse, negligence, or accident; or
- 3 Connected, installed, adjusted, or used otherwise than in accordance with the instructions furnished by SensorLink Corporation.

This Warranty is in lieu of any other warranty, expressed or implied. SensorLink Corporation reserves the right to make any changes in the design or construction of its instruments at any time, without incurring any obligation to make any change whatever in units previously delivered.

If a failure occurs, contact the manufacturer for a Return Authorization and instructions for return shipment. This warranty constitutes the full understanding of the manufacturer and buyer, and no terms, conditions, understanding, or agreement purporting to modify or vary the terms hereof shall be binding unless hereafter made in writing and signed by an authorized official of SensorLink Corporation.

# Quality Assurance Certification True Reading RMS Amcorder UG Model 920 UG

SensorLink certifies that its calibration measurements are traceable to the National Institute of Standards and Technology (NIST), to the extent allowed by the Institute's calibration facility, and to the calibration facilities of other International Standards Organization members.

This document certifies the following Model 920 UG was/were tested at the SensorLink Corporation High Voltage Laboratory, Ferndale, WA, USA to the appropriate standard and comply with the requirements of that standard.

Serial Numbers \_\_\_\_\_

\_\_\_\_\_

Model Numbers \_\_\_\_\_

I hereby certify that the Model 920 UG Amcorder UG(s) have/has passed all tests defined in the SensorLink Corporation standard. I also certify that I have reviewed the standard and test procedure and that they are sufficient in determining compliance with the standard.

Signed \_\_\_\_\_

Date \_\_\_\_\_

SensorLink Softlink Version \_\_\_\_\_

Form No: SALE-Manual Template AMCORDER-010 REV: V02

Date: 09/23/2014

Manual Stock Code No: M050-062-001



SensorLink® Corporation

1360 Stonegate Way  
Ferndale, WA 98248 USA  
phone: 360/595.1000  
fax: 360/595.1001  
[www.sensorlink.com](http://www.sensorlink.com)