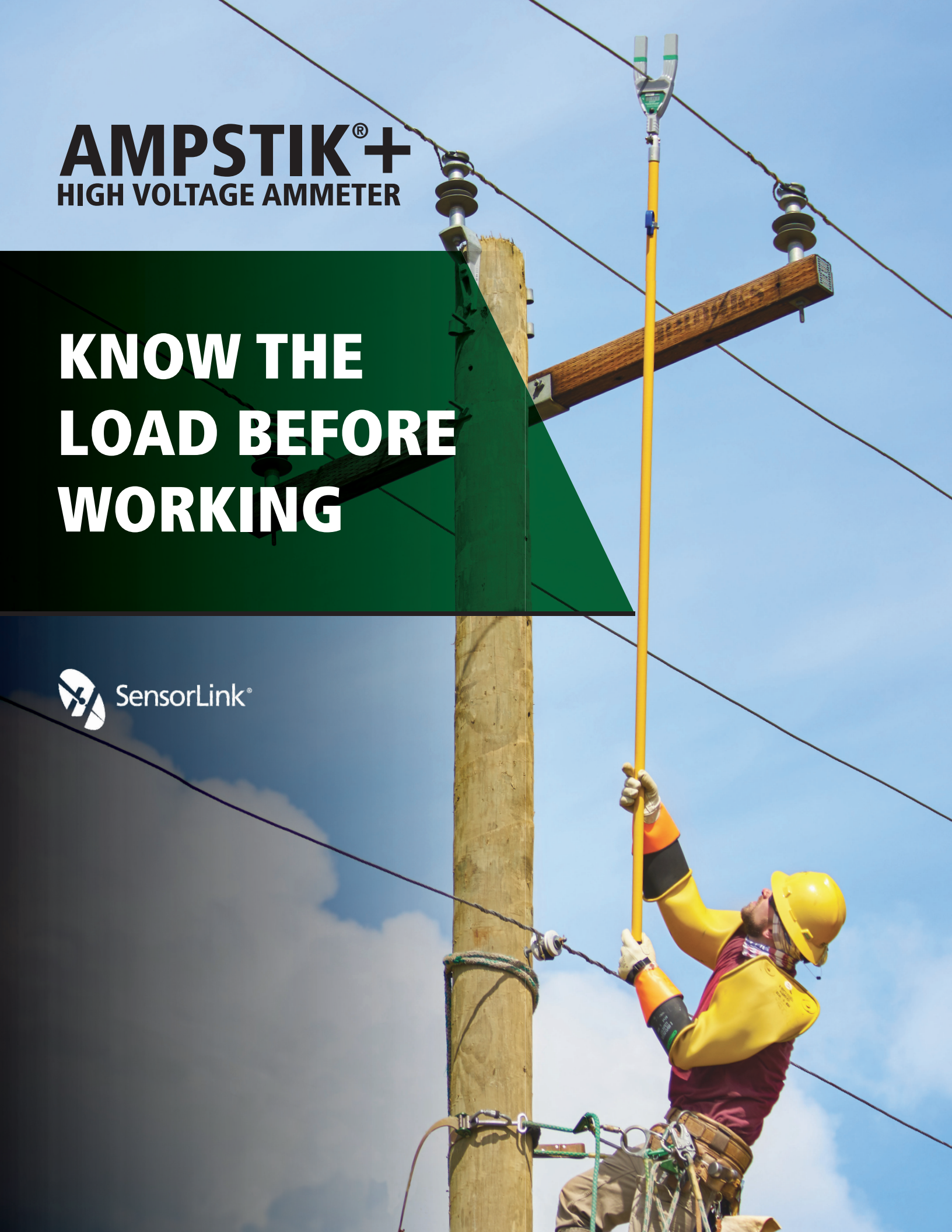


**AMPSTIK<sup>®</sup>+**  
HIGH VOLTAGE AMMETER

**KNOW THE  
LOAD BEFORE  
WORKING**



SensorLink<sup>®</sup>





Meters for safe + accurate live-line work.

# AMPSTIK®+

**The Ampstik+ provides reliable measurements, giving line personnel the confidence to make immediate decisions while working and troubleshooting in the field.**

The Ampstik+ measures in every electric utility setting with a linear current sensor to accurately measure .5A to 5000A, while in voltage environments up to 500kV.

The opening of the amp sensor is electronically closed, while external currents are electronically rejected. This design enables the user to measure an individual conductor within close proximity to adjacent conductors without interference errors.

The Ampstik+ holds up to four readings, ending the need to raise and lower the hot

stick for each reading. Position the unit over the conductor and the meter will store the current measurement within 2 - 4 seconds. Move to the next conductor and repeat the process. Return the unit to eye level once all the measurements have been taken. This simple process makes the Ampstik+ a practical, labor saving instrument.

The backlight will automatically power on when the ambient light is low. This feature enables users to better view readings on the display in low-light situations.

## PRODUCT APPLICATIONS

Check for load balance  
Conduct load studies  
Meter verification

## FEATURES

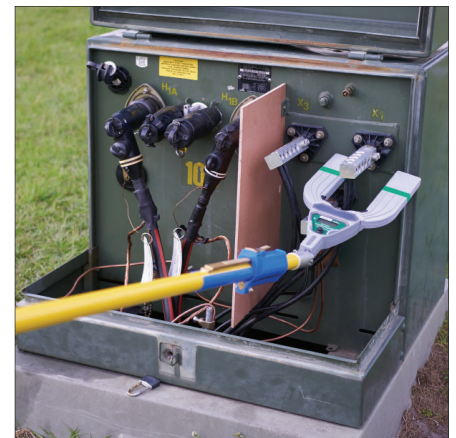
Sample and hold four amp readings  
Open CT rejects stray magnetic fields  
Easily slip on and off the conductor  
No position sensitivity  
Backlit LCD for low-light environments  
Overhead and underground use

### AMPSTIK+ SPECIFICATIONS

Model Number	8-020 XT PLUS	8-024 PLUS
Description	Ampstik+	Wide Jaw Ampstik+
Weight	1.75 lbs, 0.79 kg	2.6 lbs, 1.18 kg
Range of Operation		
Voltage	0-500kV	0-500kV
Current	0.5-5000A	0.5-5000A
Sensor Opening	2.5 in, 6.35 cm	4 in, 10.16 cm
Resolution		
Amps 0.5-99.9A	0.1 A	0.1 A
Amps 100-1999A	1 A	1 A
Amps 2000-5000A	0.01 kA	0.01kA
Accuracy	± 1%, ± 2 Counts	
Measurements	Four Readings	
Frequency, 50 Hz	47 to 53 Hz	
Frequency, 60 Hz	57 to 63 Hz	
EEC Standards	Successfully passed international test standards indicated by CE	
Mechanical		
Controls	Single button operation	
Display	3.5 Digit Display	
Backlight	Automatic ambient light sensor	
Operating Temperature	-22° to +140° F, -30° to +60° C Lithium battery required for temperatures below -4°F (-20°C)	
Housing	Fire resistant and waterproof polycarbonate & silicone	
Hot Stick Mounting	Universal chuck adapter. Hot stick not included.	
Battery	9V Alkaline or Lithium	
Options		
Hard Carrying Case	Model 7144	



Standard Ampstik+ on Overhead Switch



Wide Jaw Ampstik+ on Pad-mounted Transformer

## CONTACT US

Telephone: +360 595 1000  
Email: [info@sensorlink.com](mailto:info@sensorlink.com)  
Website: [www.sensorlink.com](http://www.sensorlink.com)

